



Seamus McAleavey

## Poverty Income Figures

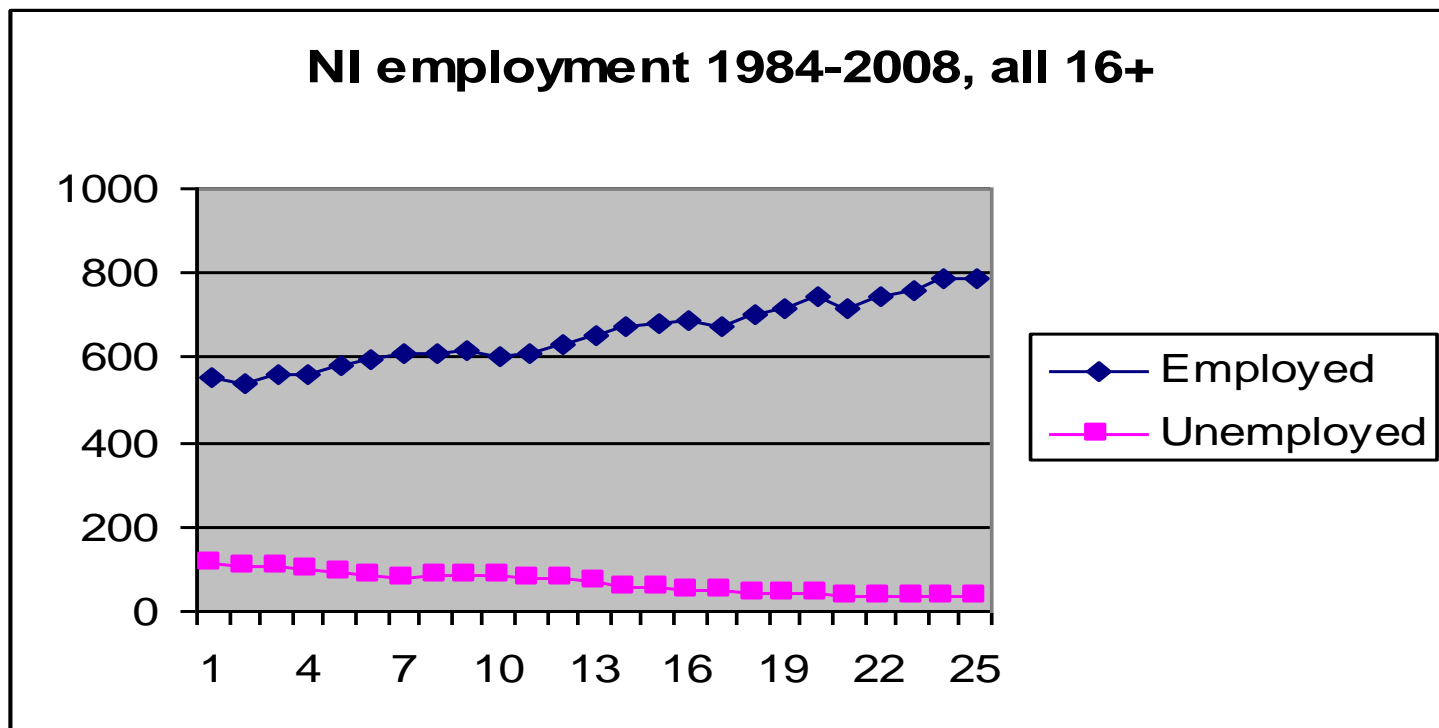
- 20% of Adult Population suffer income poverty c35,000
- Income poverty less than 60% median income
- £100 per week for single person
- £183 per week for a couple
- £186 per week lone parent with two children
- £268 per week couple with two children New Policy

Institute 2006

## Headlines

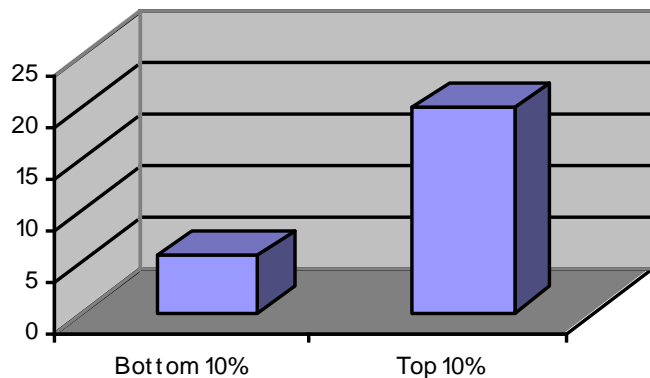
- 24% of Households affected by Fuel Poverty and likely to rise
- 29% of children living in poverty (122,000 in 2006)
- 60% increase in Homelessness since 1999
- 30% of Northern Ireland Population on benefits

## NI – fast growing economy

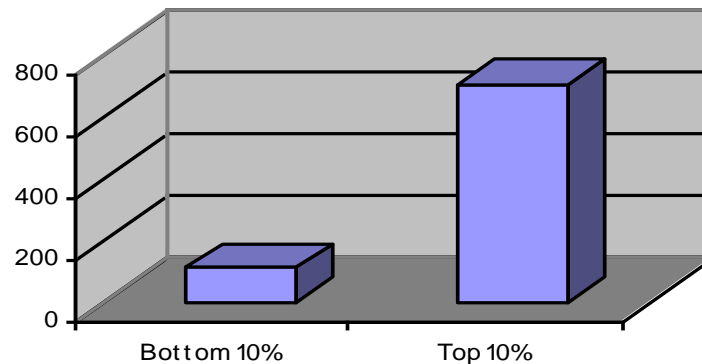


# What type of jobs?

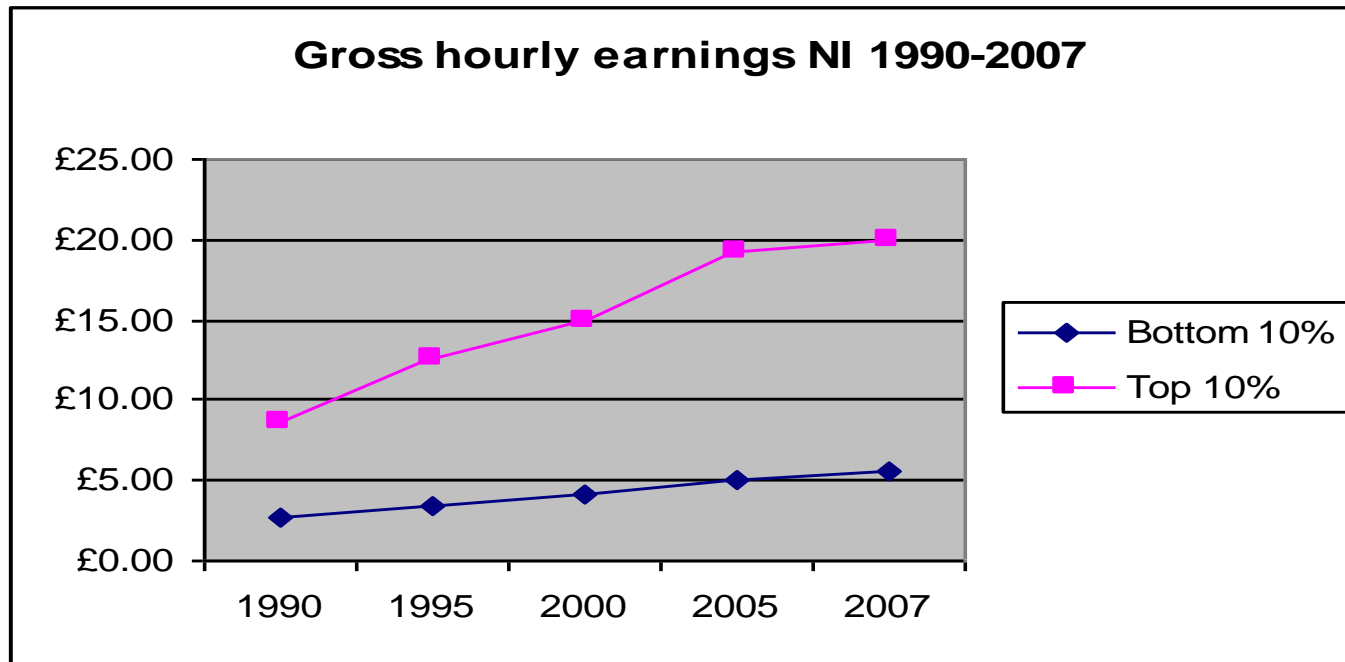
**Gross hourly earnings NI 2007**



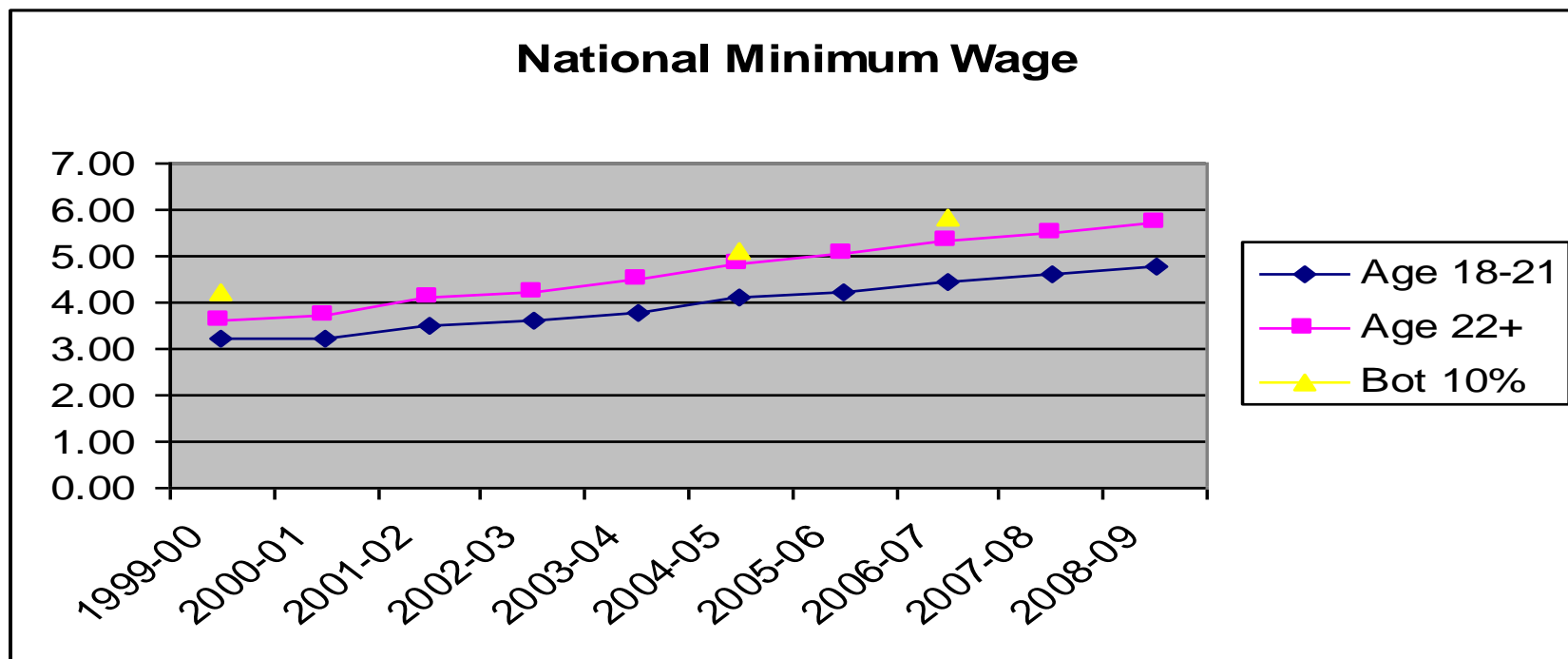
**Gross weekly earnings NI 2007**



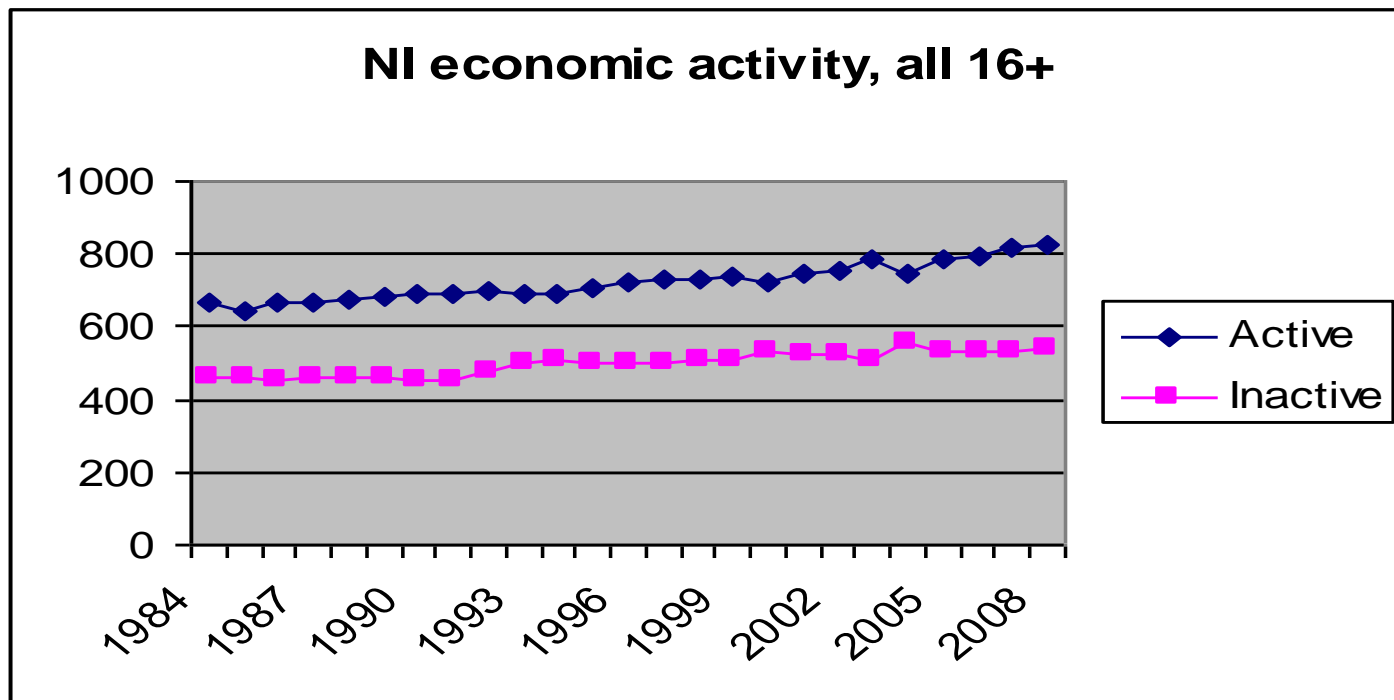
# Getting worse over time



## Low paid depend on the law

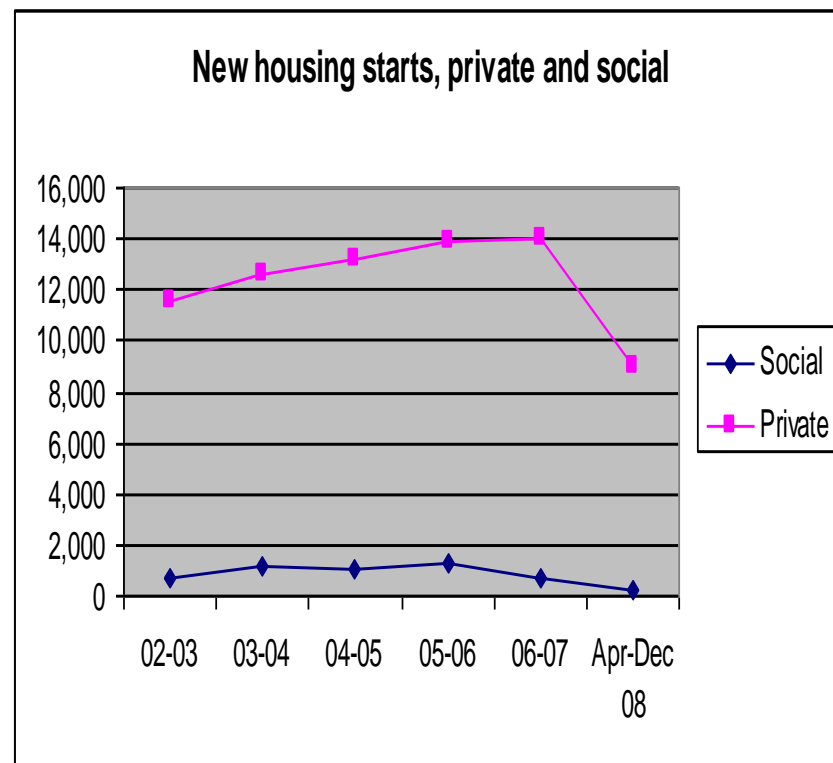
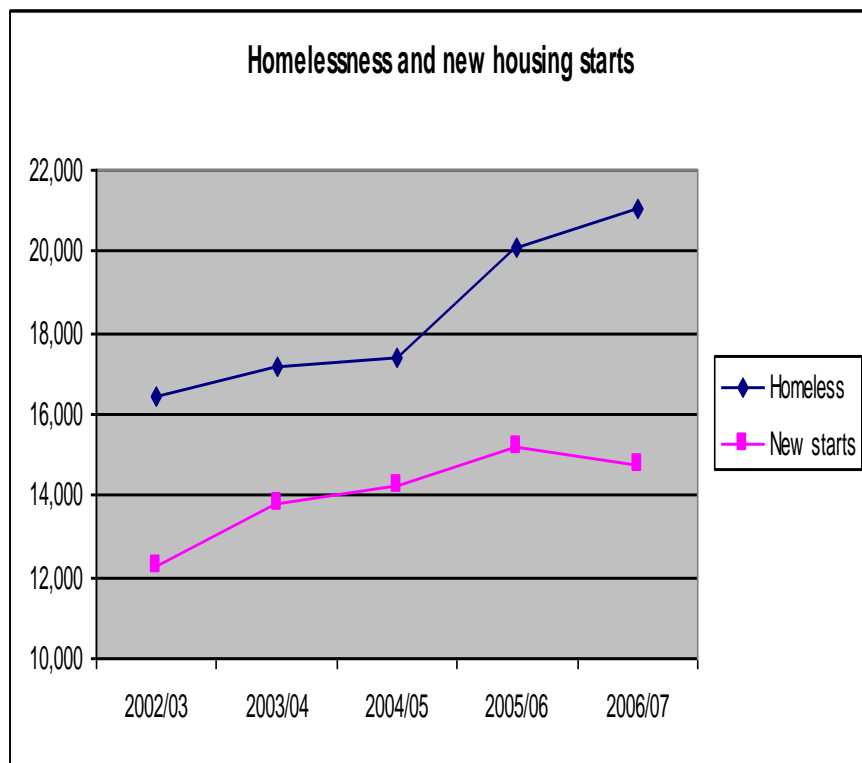


## More recent focus on inactivity



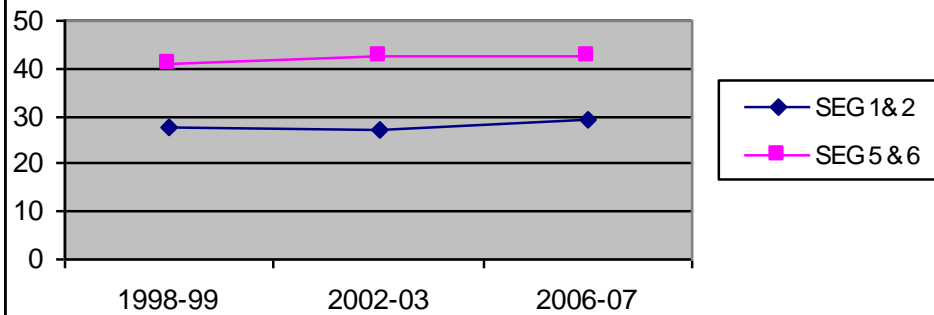


# Housing, getting worse

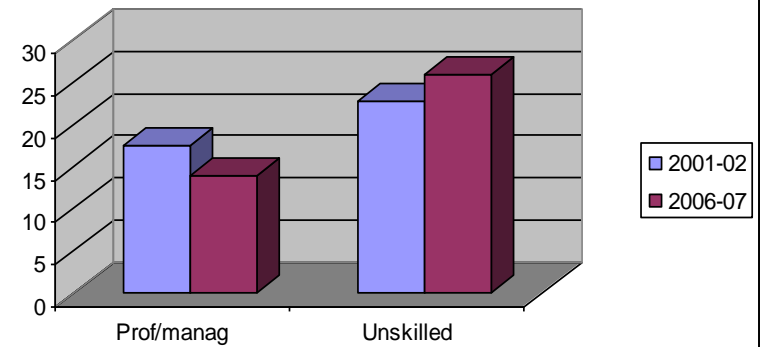


# Health

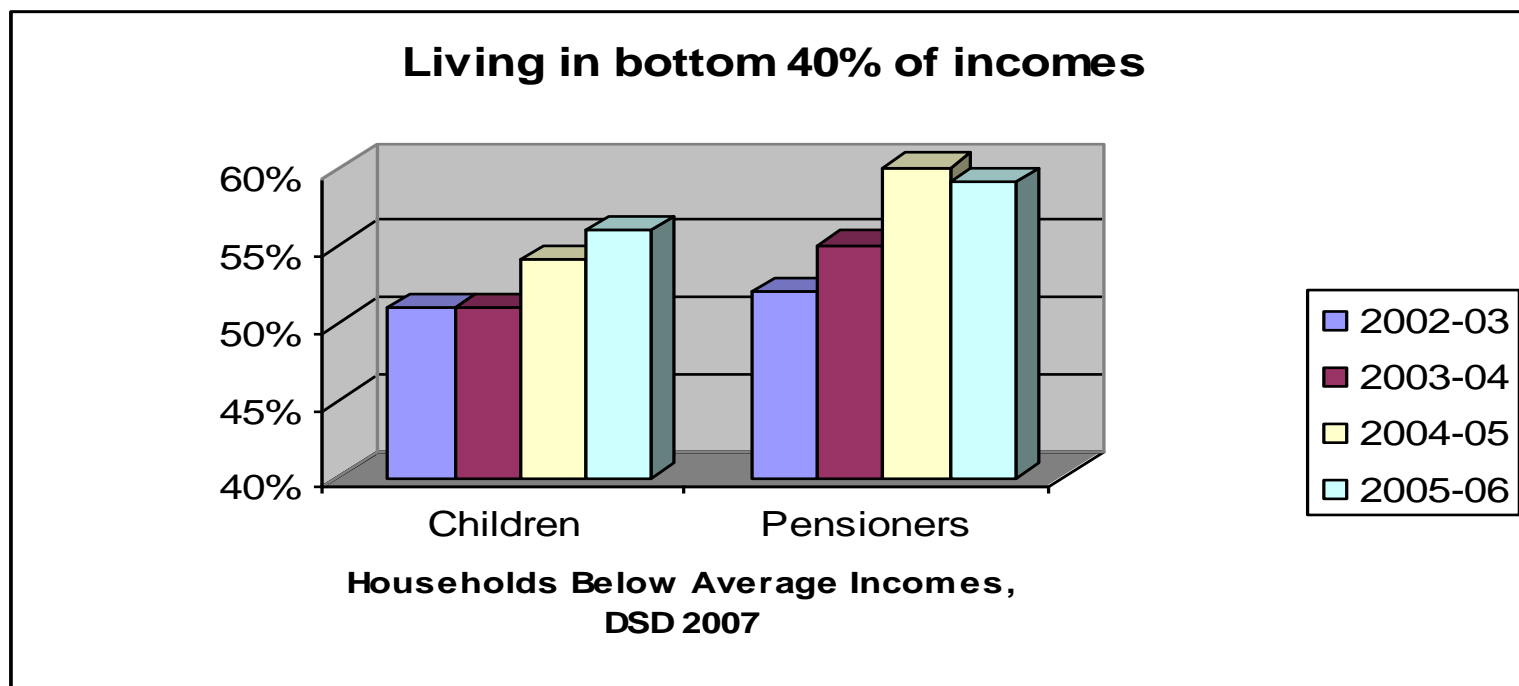
**Fig 1: Long-standing illness (4-year intervals)**



**Possible mental health problems**



# Income poverty



## Direct Rule, Poverty and inequality

- Targeting Social Need under the Conservatives
- New Labour and New TSN
- An Anti Poverty Strategy?
- Lifetime Opportunities

## Lifetime Opportunities

- » Our Goal is to ensure that every child should have a chance to develop their full potential in infancy regardless of social background.
- » Our goal is to allow all children and young people to experience a happy and fulfilling childhood, while equipping them with the education, skills and experience to achieve their potential to be citizens of tomorrow.

## Lifetime Opportunities

- » Our goal is to ensure that everyone has the opportunity to fully participate in economic, social and cultural life.
- » Our goal is to ensure older people are valued and respected, remain independent, participate as active citizens and enjoy a good quality of life in a safe and shared community.

## What's the challenge for the Northern Ireland Executive?

- Establish high level objectives
- Develop the policies to achieve the objectives
- Close the gaps between most well off and the most disadvantaged in key areas like:
  - Health
  - Education
  - Housing
  - Income